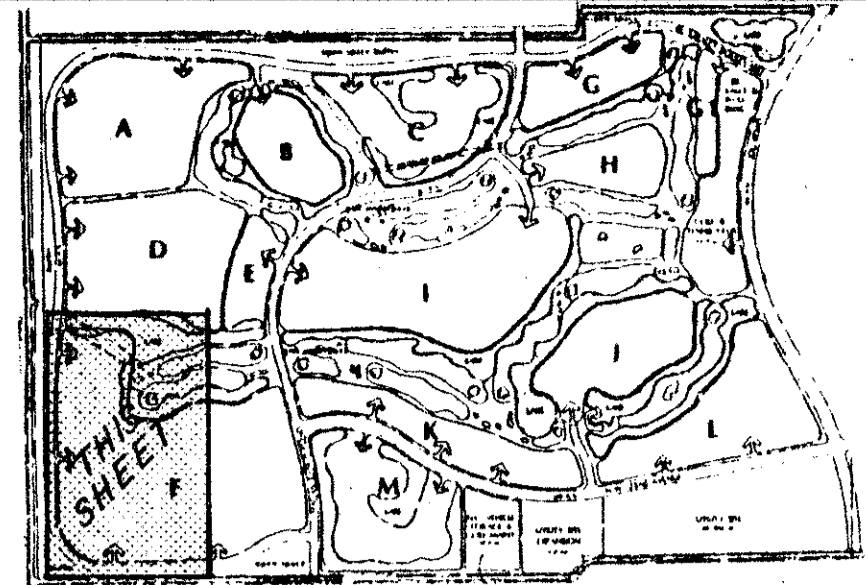


DRAWING NUMBER
55/18



ABERDEEN - PLAT NO. 2

A PORTION OF A (P.U.D.)

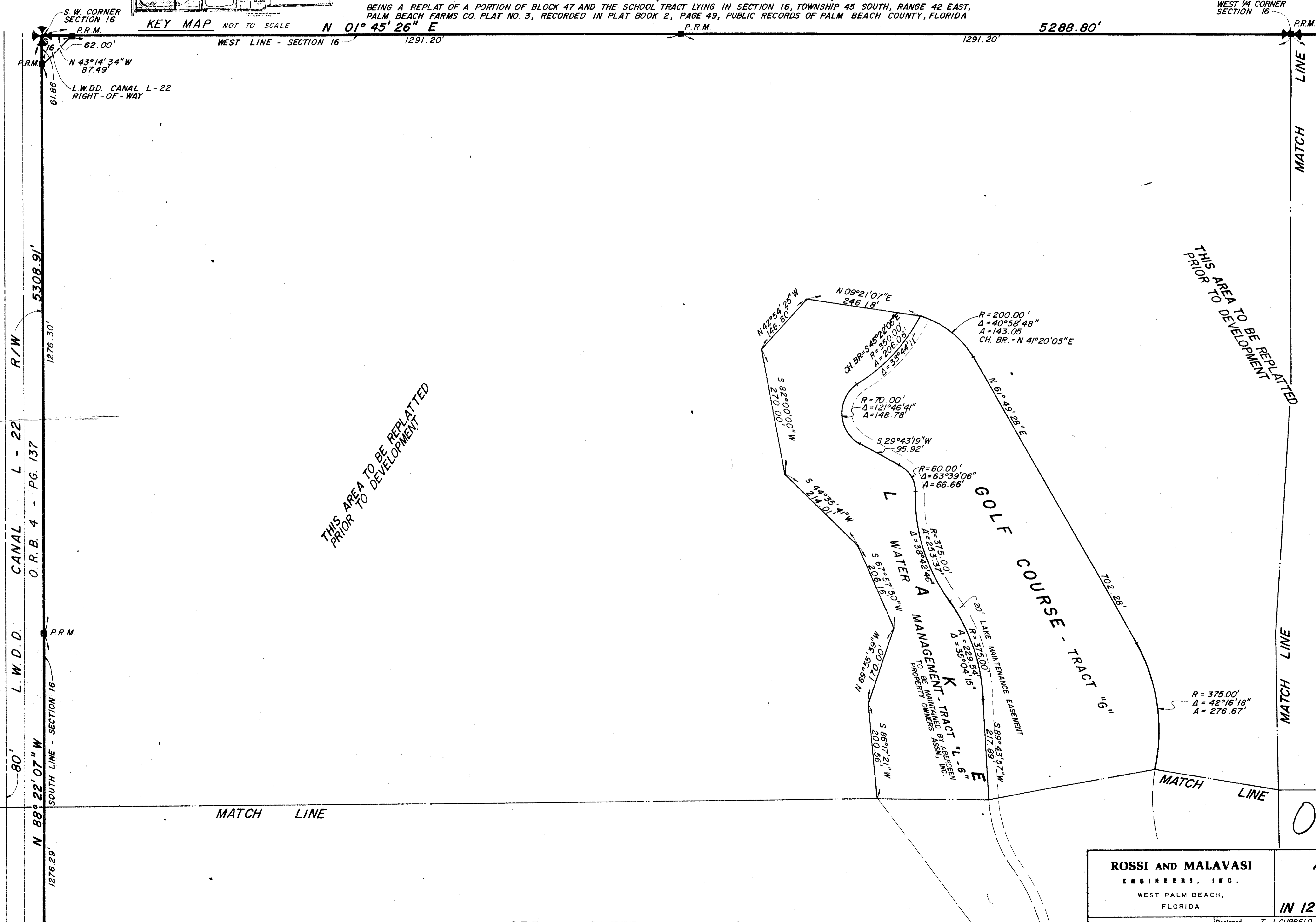
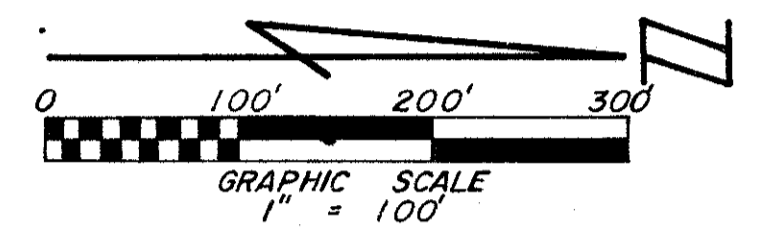
SECTIONS 15 & 16, TOWNSHIP 45 SOUTH, RANGE 42 EAST

NOT PLATTED ACREAGE

PALM BEACH COUNTY, FLORIDA - AUG., 1986

BEING A REPLAT OF A PORTION OF BLOCK 47 AND THE SCHOOL TRACT LYING IN SECTION 16, TOWNSHIP 45 SOUTH, RANGE 42 EAST, PALM BEACH FARMS CO. PLAT NO. 3, RECORDED IN PLAT BOOK 2, PAGE 49, PUBLIC RECORDS OF PALM BEACH COUNTY, FLORIDA

STATE OF FLORIDA
COUNTY OF PALM BEACH
This Plat was filed for record at ____ M.
this ____ day of _____
19 ____, and duly recorded in Plat Book No. _____
on page _____
JOHN B. DUNKLE, Clerk Circuit Court
By _____, D. C.



THIS AREA TO BE REPLATTED
PRIOR TO DEVELOPMENT

THIS AREA TO BE REPLATTED
PRIOR TO DEVELOPMENT

55/18
0270-304

SEE SHEET NO. 7

SEE SHEET NO. 9

| | | | |
|--|--------------|--|---------------|
| ROSSI AND MALAVASI ENGINEERS, INC. WEST PALM BEACH, FLORIDA | | ABERDEEN PLAT NO. 2 IN 12 SHEETS SHEET NO. 8 | |
| Date | AUGUST, 1986 | Designed | T. J. CURBELO |
| Drawn | D. FREDERICK | Scale | 1" = 100' |
| Checked | | Job No. | |
| File No. | | Sheet | 8 of 12 |

DRAWING NUMBER

DRAWING NUMBER

DRAWING NUMBER

PLAN HOLD CORPORATION • IRVINE, CALIFORNIA
RECORDING NUMBER 07548

PLAN HOLD CORPORATION • IRVINE, CALIFORNIA
RECORDING NUMBER 07548

PLAN HOLD CORPORATION • IRVINE, CALIFORNIA
RECORDING NUMBER 07548

PLAN HOLD CORPORATION • IRVINE, CALIFORNIA
RECORDING NUMBER 07548